

2008 DEMOGRAPHIC PROFILE

Snyder County

Population: 38,300

Median Age: 38

Average Household Income: \$55,448

Per Capita Income: \$21,258

Population Age 16+

Non Labor Force
37.30%

not working nor seeking employment

11,545

Labor Force
62.70%

employed or seeking employment

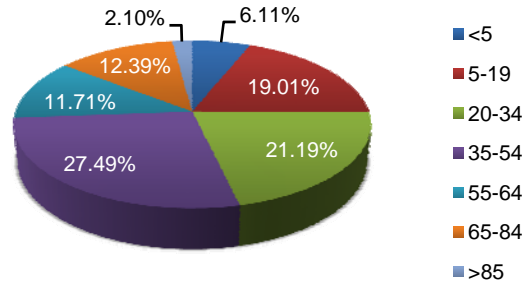
Civilian Employed
18,646

Civilian Unemployed
742

Educational Attainment

Population 25+	25,605
Less than 9th Grade	11.78%
9th to 12th No Diploma	13.81%
High School Graduate	46.94%
Some College, No Degree	10.34%
Associate Degree	4.28%
Bachelor's Degree	8.12%
Graduate or Professional Degree	4.74%
% High School Graduate +	74.42%
% Bachelor's Degree +	12.85%

Population by Age



Top Migratory Counties

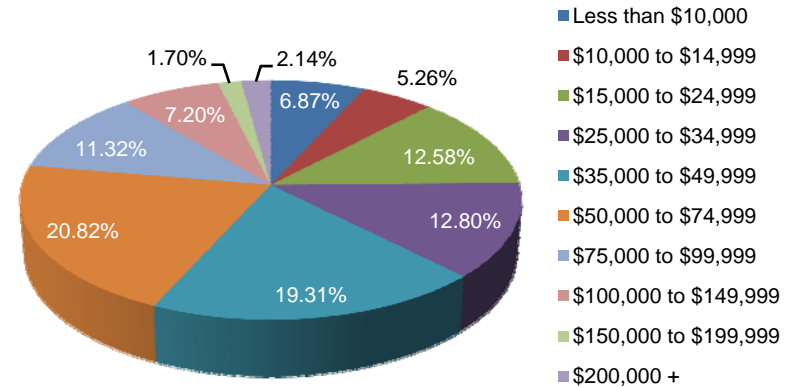
In-Migration		Out-Migration	
Northumberland, PA	373	Northumberland, PA	299
Union, PA	237	Union, PA	189
Juniata, PA	62	Juniata, PA	51
Mifflin, PA	48	Mifflin, PA	43
Lancaster, PA	43	Perry, PA	36
Total for county	1,486	Total for county	1,202

Source: Economic Modeling Specialists, Inc., March 2009, for the 2006 time period, based on data from the Internal Revenue Service

Race and Ethnicity

American Indian or Alaska Native Population	0.04%
Asian Population	0.44%
Black Population	0.85%
Hawaiian or Pacific Islander Population	0.01%
Multi-race Population	0.52%
Other Race Population	0.30%
White Population	97.83%
Hispanic Population	1.37%
Non Hispanic Population	98.63%

Household Income



Central Pennsylvania Workforce Development Corp.
1610 Industrial Boulevard, Suite 500 A
Lewisburg, PA 17837
570.522.0600 (P)
570.522.0805 (F)