

# 2008 DEMOGRAPHIC PROFILE

# Northumberland County

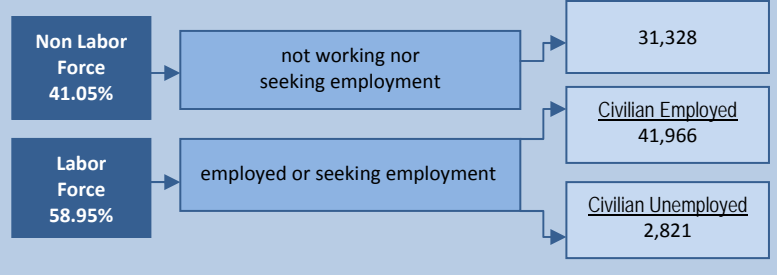
**Population: 91,488**

**Median Age: 43**

**Average Household Income: \$46,866**

**Per Capita Income: \$20,207**

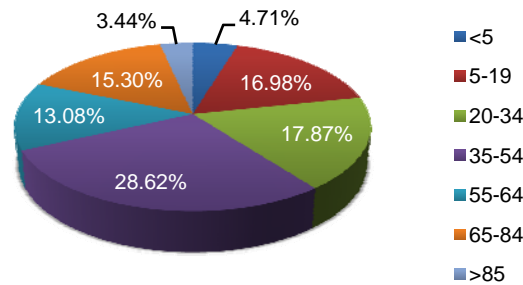
## Population Age 16+



## Educational Attainment

|                                 |        |
|---------------------------------|--------|
| Population 25+                  | 66,360 |
| Less than 9th Grade             | 3.78%  |
| 9th to 12th No Diploma          | 10.22% |
| High School Graduate            | 53.60% |
| Some College, No Degree         | 13.64% |
| Associate Degree                | 5.49%  |
| Bachelor's Degree               | 8.82%  |
| Graduate or Professional Degree | 4.45%  |
| % High School Graduate +        | 86.00% |
| % Bachelor's Degree +           | 13.27% |

## Population by Age



## Top Migratory Counties

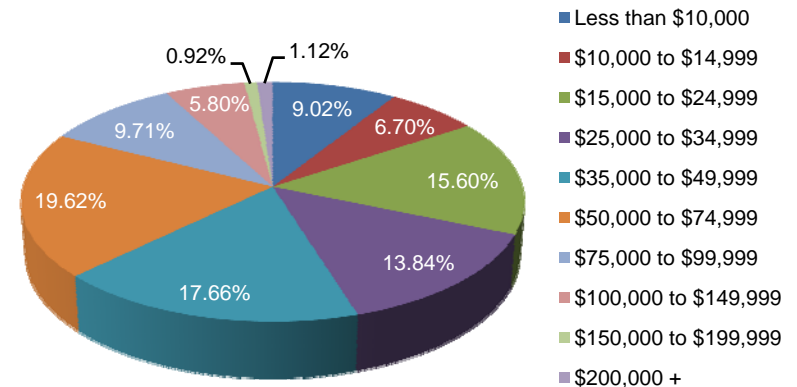
|                         | In-Migration | Out-Migration |
|-------------------------|--------------|---------------|
| Union, PA               | 427          | 514           |
| Snyder, PA              | 299          | 373           |
| Lycoming, PA            | 257          | 211           |
| Montour, PA             | 182          | 196           |
| Columbia, PA            | 163          | 180           |
| <b>Total for county</b> | <b>2,834</b> | <b>3,208</b>  |

Source: Economic Modeling Specialists, Inc., March 2009, for the 2006 time period, based on data from the Internal Revenue Service

## Race and Ethnicity

|   |        |
|---|--------|
| American Indian or Alaska Native Population | 0.00%  |
| Asian Population                            | 0.17%  |
| Black Population                            | 2.31%  |
| Hawaiian or Pacific Islander Population     | 0.03%  |
| Multi-race Population                       | 0.85%  |
| Other Race Population                       | 0.65%  |
| White Population                            | 95.99% |
| Hispanic Population                         | 1.68%  |
| Non Hispanic Population                     | 98.32% |

## Household Income



Central Pennsylvania Workforce Development Corp.  
 1610 Industrial Boulevard, Suite 500 A  
 Lewisburg, PA 17837  
 570.522.0600 (P)  
 570.522.0805 (F)