

2008 DEMOGRAPHIC PROFILE

Montour County

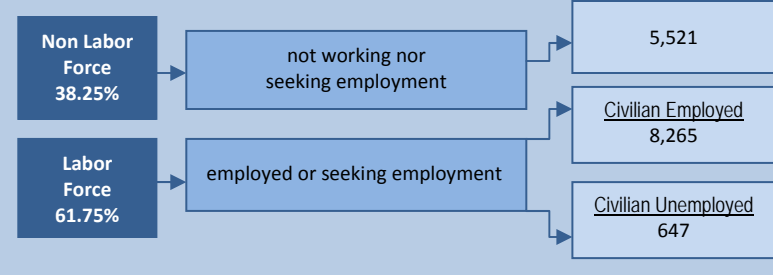
Population: 17,758

Median Age: 43

Average Household Income: \$59,357

Per Capita Income: \$25,679

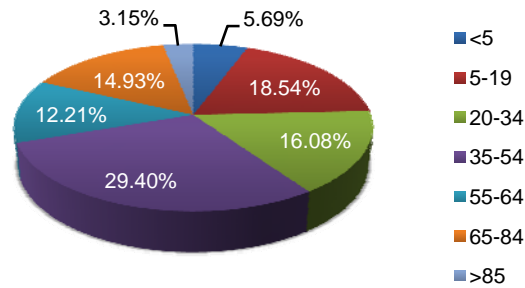
Population Age 16+



Educational Attainment

Population 25+	12,411
Less than 9th Grade	5.97%
9th to 12th No Diploma	10.85%
High School Graduate	42.27%
Some College, No Degree	13.29%
Associate Degree	5.02%
Bachelor's Degree	11.32%
Graduate or Professional Degree	11.27%
% High School Graduate +	83.18%
% Bachelor's Degree +	22.59%

Population by Age



Top Migratory Counties

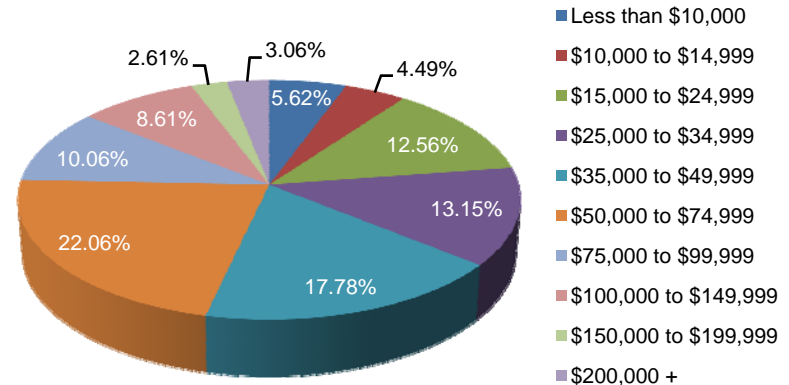
	In-Migration	Out-Migration
Columbia, PA	215	Columbia, PA 232
Northumberland, PA	180	Northumberland, PA 182
Lycoming, PA	52	Luzerne, PA 43
Union, PA	30	Lycoming, PA 30
Luzerne, PA	23	Snyder, PA 19
Total for county	989	Total for county 968

Source: Economic Modeling Specialists, Inc., March 2009, for the 2006 time period, based on data from the Internal Revenue Service

Race and Ethnicity

American Indian or Alaska Native Population	0.07%
Asian Population	1.34%
Black Population	1.04%
Hawaiian or Pacific Islander Population	0.00%
Multi-race Population	0.63%
Other Race Population	0.39%
White Population	96.54%
Hispanic Population	1.49%
Non Hispanic Population	98.51%

Household Income



Central Pennsylvania Workforce Development Corp.
 1610 Industrial Boulevard, Suite 500 A
 Lewisburg, PA 17837
 570.522.0600 (P)
 570.522.0805 (F)