

# 2008 DEMOGRAPHIC PROFILE

# Lycoming County

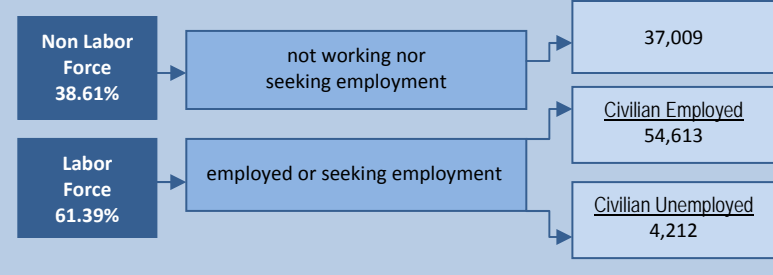
**Population: 117,797**

**Median Age: 41**

**Average Household Income: \$51,126**

**Per Capita Income: \$21,270**

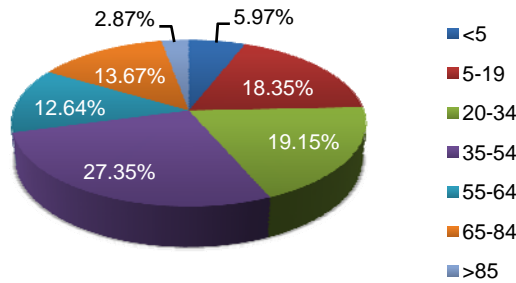
## Population Age 16+



## Educational Attainment

Population 25+	80,574
Less than 9th Grade	2.55%
9th to 12th No Diploma	11.59%
High School Graduate	38.84%
Some College, No Degree	14.89%
Associate Degree	11.61%
Bachelor's Degree	14.76%
Graduate or Professional Degree	5.76%
% High School Graduate +	85.86%
% Bachelor's Degree +	20.52%

## Population by Age



## Top Migratory Counties

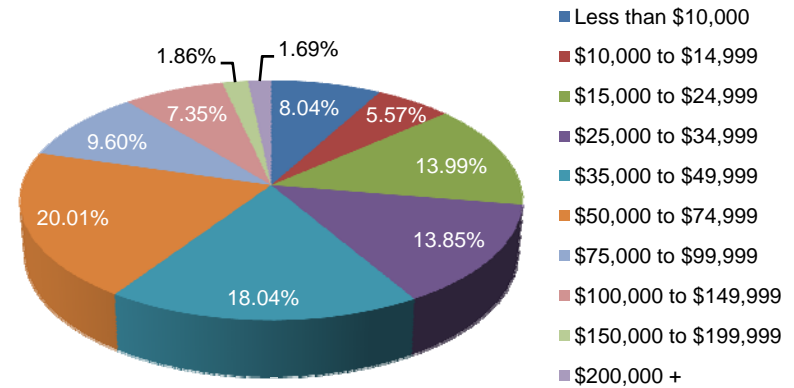
In-Migration		Out-Migration	
Clinton, PA	309	Clinton, PA	360
Northumberland, PA	211	Northumberland, PA	257
Union, PA	105	Union, PA	109
Philadelphia, PA	88	Centre, PA	93
Tioga, PA	67	Columbia, PA	89
<b>Total for county</b>	<b>2,835</b>	<b>Total for county</b>	<b>3,267</b>

Source: Economic Modeling Specialists, Inc., March 2009, for the 2006 time period, based on data from the Internal Revenue Service

## Race and Ethnicity

American Indian or Alaska Native Population	0.34%
Asian Population	0.59%
Black Population	4.42%
Hawaiian or Pacific Islander Population	0.02%
Multi-race Population	1.18%
Other Race Population	0.35%
White Population	93.11%
Hispanic Population	0.89%
Non Hispanic Population	99.11%

## Household Income



Central Pennsylvania Workforce Development Corp.  
 1610 Industrial Boulevard, Suite 500 A  
 Lewisburg, PA 17837  
 570.522.0600 (P)  
 570.522.0805 (F)